

Smart

Pathways LLC

Smart Conduit Bodies TM



Smart LB'S

“Only the telecommunication conduit body should be used in a telecommunications installation”

TDMM, 11th Edition

BICSI 2006

www.smartlb.com

“DIE CAST ALUMINUM”

- Grey powder coat paint finish
- For use with Liquidtight, “EMT”, “IMC” or “Rigid” Metallic conduit and fittings
- Suitable for indoor (Premise) / Outdoor (OSP)/Plenum use
- CSAUS(USA) and CSA (Canada) Listed for both power and communication applications
- BICSI “standards compliant” (11th edition TDMM)
- Includes gasketed cover for “wet locations”

“Die Cast Aluminum” Smart Conduit Body™ LB with cover included

Size Range	Gray Part #	K.O. Size	Package Qty	Weight/ea (lbs)	Max. Bend Radius (in)	Cu Inch Fill	L (in)	W (in)	D (in)
3/4” to 1”	KBLB100	1”	10	.52	1.0	12	5.9	1.8	2.3
3/4” to 1 1/4”	KBLB120	1 1/4”	20	2.1	1.36	47	10.0	2.5	3.5
1 1/2” to 2 1/2”	KBLB250	2 1/2”	4	14.0	4.60	413	22.8	4.3	7.2
3” to 4”	KBLB400	4”	2	27.4	6.65	1221	30.0	6.4	10

Use metal conduit “reducer bushings” for interim size raceways

Smart Conduit Body™ cover included with each LB. (except 1”) Replacement covers and gaskets may be purchased separately.

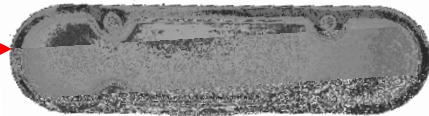


4” 2 1/2” 1 1/4” 1”

Embossed with Smart Conduit Body™ identifier logo



Self adhesive Gasket and Cover included



Universal Stainless Steel Cover Screws



Threaded screw holes

All Smart LB's meet the Communication Cable bend requirements

All Smart LB's meet the Fiber Optic Cable bend requirements

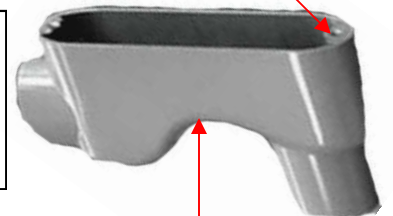
“After completion of the pull, the (Fiber) cable should not have any bend radius smaller than ten (10) times the cable diameter.”

NECA 301-3

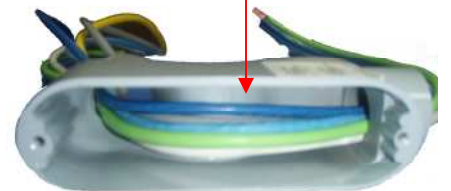


Threaded ports
Easily adapts to all metallic conduits
Use reducer bushing for interim sizes

Tapered outlet port to direct the cables
No sharp edges



Built in Bend Radius



“PVC”

- Standard Grey PVC color
- For use with “Sch 40 rigid PVC”, “Sch 80 rigid PVC”, “ENT”, “PVC Flex Duct”, “PVC General Purpose Duct” “PVC Riser Duct”, Type NM Liquidtight conduit and “rigid nonmetallic Power and Communication Ducts”
- Suitable for Indoor (Premise) / Outdoor (OSP)
- CSA(USA) and CSA(Canada) Listed for both power and communication applications
- BICSI “standards compliant” (11th edition TDMM)
- Includes gasketed cover for “wet locations”

“PVC” Smart Conduit Body™ LB with cover included

Size Range	Gray Part #	K.O. Size	Package Qty	Weight/ea (lbs)	Max. Bend Radius (in)	CU. Inch Fill	L (in)	W (in)	D (in)
3/4” to 1”	N/A								
3/4” to 1 1/4”	KBLB121	1 1/4”	20	1.27	1.43	47	10.1	2.5	3.5
1 1/2” to 2 1/2”	KBLB251	2 1/2”	4	7.48	4.61	443	23.1	4.3	7.2
3” to 4”	KBLB401	4”	2	14.35	6.55	1248	30.3	6.4	10.0



4” 2 1/2” 1 1/4”

Smart LB’s meet the Telecommunications and Fiber Optic cabling bend radius requirements

Smart Conduit Body™ cover included with each LB.
 Replacement covers and gaskets may be purchased separately.
(Note: Smart covers only fit Smart Conduit Body™ products)

Embossed with **Smart Conduit Body™** identifier logo

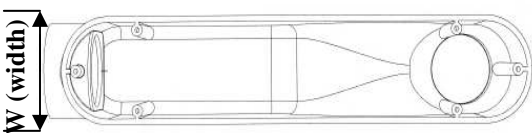
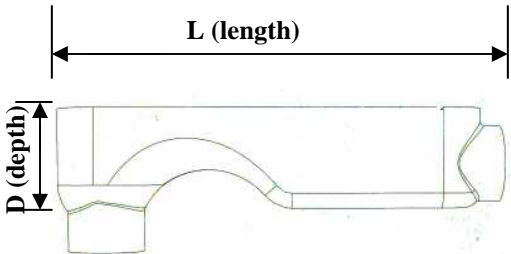
Self adhesive Gasket and Cover **included**

Universal Stainless Steel Cover Screws



Tapered outlet port to direct the cables
 No sharp edges

Built in Bend Radius



PVC Solvent Cement Ports
 Use reducer bushings for interim sizes



Self tapping screw holes

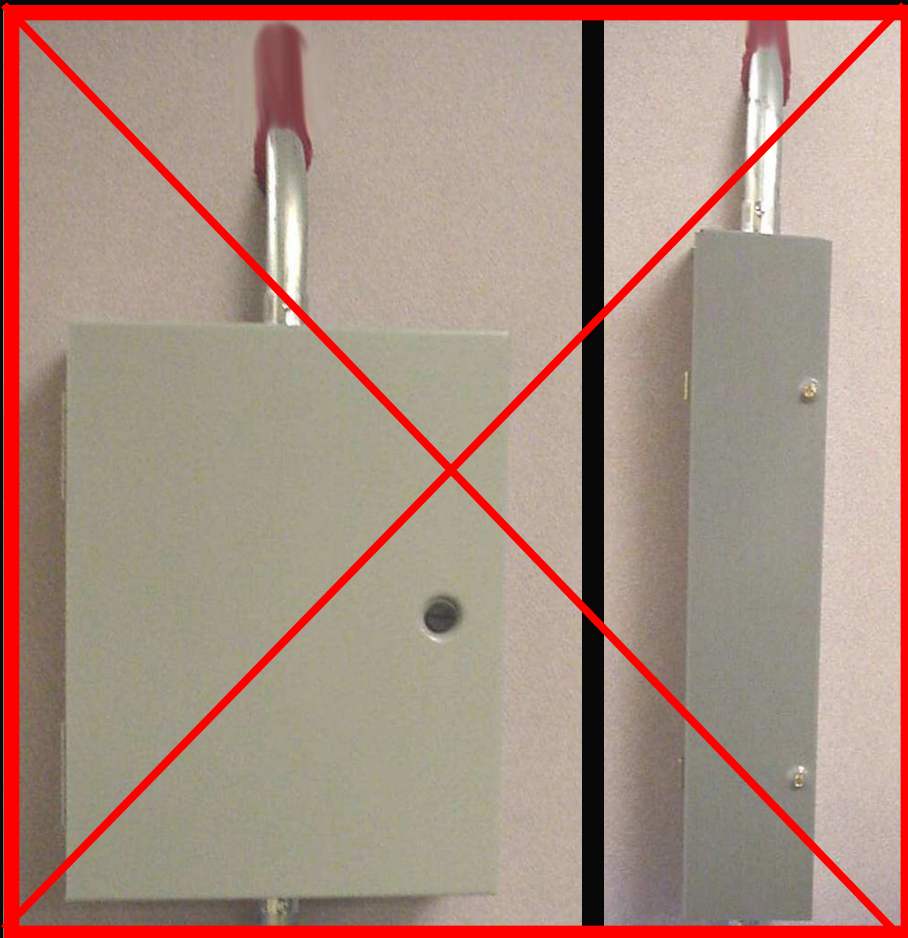


Smart Conduit Bodies™

Eliminate the time consuming slotted walls and expensive pull boxes
and be
BICSI “Standards Compliant”

OLD WAYS

SMART WAY



Saves
time, space, and money
3 pretty good reasons